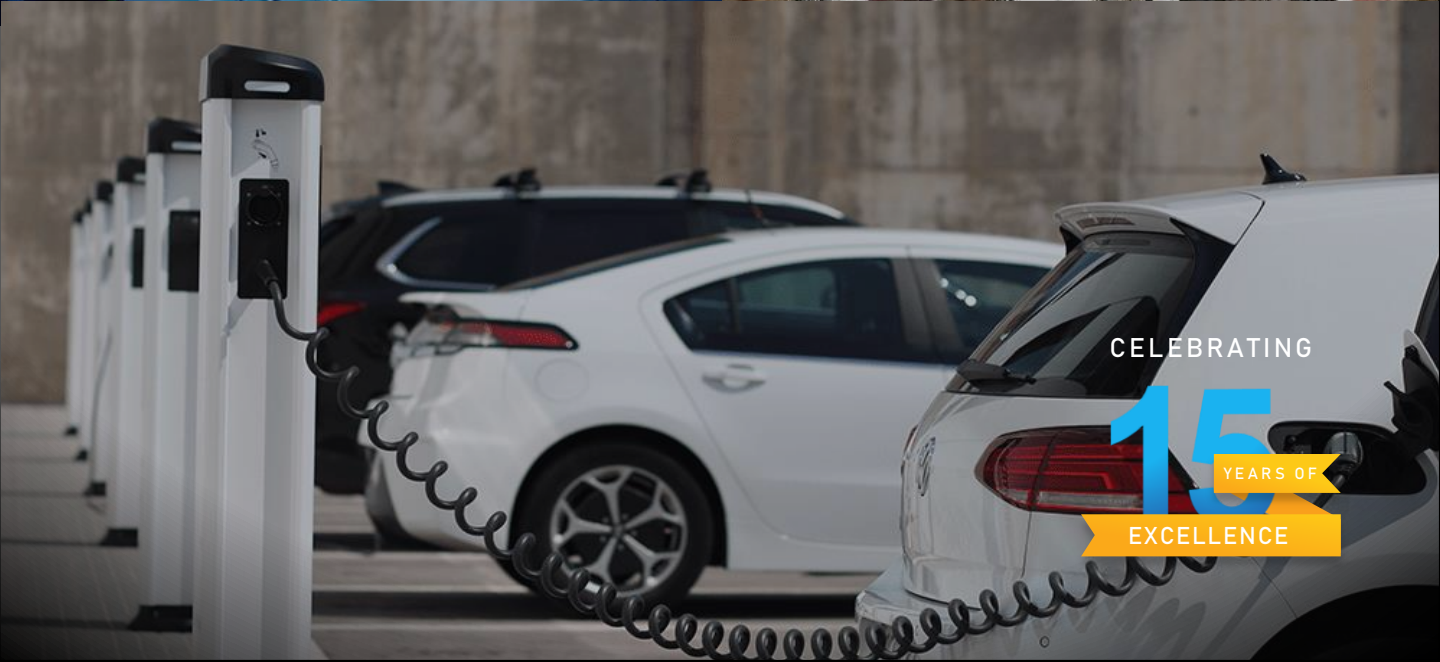




Bringing Technology at your Doorstep !

PRODUCT LINE CARD



CELEBRATING

15
YEARS OF
EXCELLENCE

ABOUT US

Global Electronics is an authorized distributor and reseller of Electronic Components, System, equipment and provides electronics design / integration services with headquarters in Pune established in the year 2007. We have regional offices at Bangalore, Hyderabad and Delhi from where we service the customer all across Indian Sub Continent through our dedicated technical field application and product marketing team .

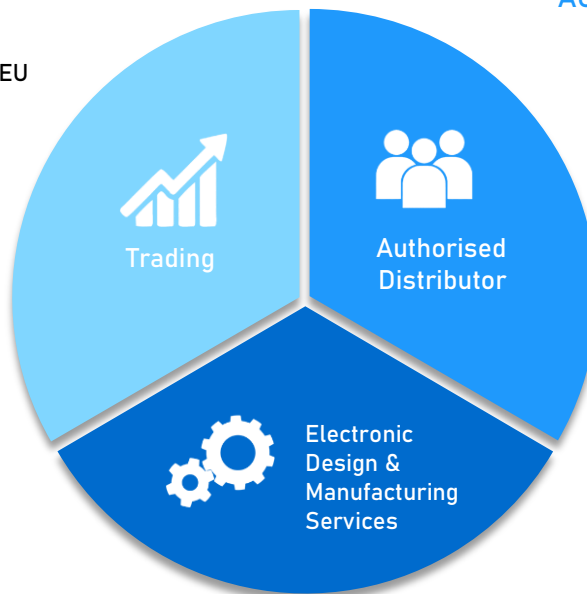
Our focused market segment is Defence, Avionics, Electric Vehicle, Industrial, Medical, Railways, and various scientific, R&D and government institutions. Our vision is to be a world class value added supply chain partner for electronic manufacturing industry.

As an organization, we are passionate about making the latest product solution accessible to our customers at the earliest. We have a dedicated team of Field Application Engineers that helps customer from concept stage to prototyping, and a dedicated Sales/technical team that supports on commercial, logistics and kiting during mass production.

BUSINESS MODEL :

TRADING :

- One Stop Shopping
- Stock Support in IND/SG/USA/EU
- Trading in INR/USD
- Consolidation / Kitting
- Drop Shipment
- Strong in EOL / Obsolete Parts



AUTHORISED DISTRIBUTOR :

- Authorised Channel Partner for reputable OEM's
- Design and Sample Support
- Training & Installation

ELECTRONIC DESIGN & MANUFACTURING SERVICES :

- Phase I : Proof Of Concept
- Phase II : Feedback From Customer
- Phase III : Pilot Production
- Phase IV : After Sales, Warranty And Repairs Service

AUTHORISED LINES



Elektro-Automatik



ELEKTRO-AUTOMATIK

- 5kW to 30 kW,
- expandable up to 1080 kW
- Auto-ranging input/output
- Function generator
- Solar/FC simulator/ battery testing
- MPP tracking simulation

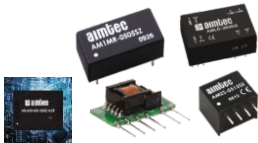


Power



XP POWER

- AC/DC Converter
- DC/DC Converter
- MIL grade/medical/ industry standard
- High voltage power module



AMITEC

- DC/DC Isolated
- AC/DC converter
- EMC Filter



POWERGOOD

- AC/DC Converter
- DC/DC Converter
- Vicor Cross model



AEPS GROUP

- DC/DC Converter
- AC/DC converter
- MIL grade converter



TOTAL POWER SOLUTIONS

- AC-DC / DC-DC Din rail & Enclosed power converter
- AC-DC wallmount / Desktop power supply
- Battery Charger



PREEN

- High Performance Programmable AC Power Source
- Regenerative Grid Simulator
- AC Power Source/ Frequency Converter



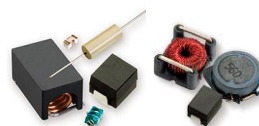
KNITTER-SWITCH

- Toggle switches
- Pushbutton switches
- Illuminated pushbutton switches
- Tactile switches
- Slide switches
- Dual-in-line switches
- Rotary coded switches
- Rotary switches
- Encoders
- Detector- and Micro-switches



ITW SWITCHES

- Push Button Switches
- Snap Action Switches
- Actuators
- Slide Switches
- Rotary Switches & more



API DELEVAN

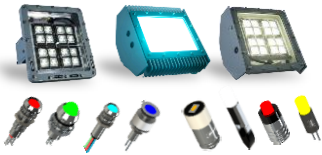
- RF/ Power Inductor
- EMI/RFI Suppressor
- Transformers
- MIL-STD 981/202/690
- MIL-PRF-39010/01 & more

AUTHORISED LINES



MARL INTERNATIONAL

- Defense Lighting
- Panel Indicator LED's
- PCB Mounting LED's
- Bulb replacement LED's



MOLICEL

- 2800 & 4200 mAh Lithium-ion Rechargeable Battery
- Most ideal Li-ion cell for EV & Drones Applications



HENKEL

- Retaining Compounds
- Instant Adhesives
- Electronic Potting Gel
- Thread Sealants



PARTEX Marking Systems

- Closed Marker
- Cable Tie Mounted Markers
- Crimp Terminals
- Component Marking
- Cable Ties
- Cable Accessories



Neptune Sonar

- Acoustic sensors – Naval and Defense applications



TELEGARTNER

- RF connectors, mobile radio components, LF connectors
- Components for machine, plant and hall cabling
- Components for building and floor cabling
- Circular Connectors for Industrial Ethernet



CERVOZ

- Industrial SSD, Industrial Memory
- Industrial DRAM Module
- Modular Expansion Card
- Industrial Embedded Module



DURABOOK

- Z14I Rugged Laptop
- S14I Rugged Laptop
- S15AB Rugged Laptop
- R11 Rugged Laptop
- R11L Rugged Laptop
- U11I Rugged Tablet



TECHNIEK

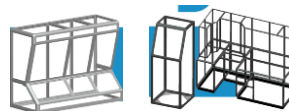
B+E TECHNIEK B.V.

- Electric heating
- Gas Heating
- Customization as per customer's requirement



DAVALOW DORLEC SYSTEMS LTD

- An Aluminium Framing System
- Small Consoles
- Medium Consoles
- Large Consoles
- 90 Degree
- External Angles
- Internal Angles
- Hardware



AUTHORISED LINES



SHIFTEC

- Electronics for gear control
- CANBus control
- sensor integration
- Anti-Vibration dampers
- Clutch Control



Apollo Microwaves

- RF/ Power Inductor
- EMI/RFI Suppressor
- Transformers
- MIL-STD 981/202/690
- MIL-PRF-39010/01 & more



ATI-Interco

- Push Button Switches
- Snap Action Switches
- Actuators
- Slide Switches
- Rotary Switches & more



AT MICROWAVE

- RF Products
- Microwave Products
- Millimeter wave products



ETL

- Rack Systems
- RF components
- Satcom RF test equipment



Millimeter Wave Technologies

- RF Connectors
- Cable assemblies



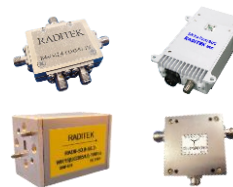
Allen Avionics

- Noise and Hum Elimination
- Active and Passive Delay
- custom filters
- Offset marking



Optical Filters

- EMI/RFI Shielding
- Display filters
- Touchscreens
- Display Enhancements



RADITEK INC

- RF Components
- SATCOM components
- waveguide components
- Oscillators and Synthesizers
- RF Test solutions



JONARD Tools

- Manufactures tools for the Telecom
- CATV
- Fiber Optic
- Home Automation
- Electrical markets
- Security & Alarms

AUTHORISED LINES

ATGBICS



ATGBICS

- Optical Transceivers
- SFP/SFP+/SFP28/QSFP56/QSFP+/QSFP28/Legacy/CFP,CVR modules



Brainboxes Limited

- Industrial Ethernet Switches
- Serial Cards
- Remote IO
- USB to Serial
- Ethernet to Serial



HASCO

- Electromechanical relays
- Latching relays
- Hasco Reeds
- Proximity switches



ALTRAN Magnetics

- EMI Filters
- Motors & Blowers
- DC Contactors
- Solid state relays
- Photo Controls

REAL SOLUTIONS FROM REAL PEOPLE

Your product doesn't start with resin, it starts with a vision. That's why we're committed to providing the insight, dedication, responsiveness and flexibility you need to turn resin into reality. From our industry-leading product line and value-added services, to the ability to forecast industry trends while anticipating your needs, we pride ourselves on our ability to be quick, flexible and respond with a sense of urgency when you need us.



We provide the quickest responses to quote requests in the industry. Call +91- 9158448585 / 7709043841 or mail us on info@globalelec.co.in to request a quote today!



Bringing Technology at your Doorstep !

The Online Resource
for Engineers
www.globalelec.co.in



DIRECT OEM ACCOUNT



Wagner + Grimm AG



Wherever you are, we'll be there.

To ensure we're able to quickly provide technical insight and answers to our customers' questions, and ship in-stock materials without delay, we've sales locations PAN India. Visit www.globalelec.co.in to find a sales representative near you!



Scan QR to download

- HEAD OFFICE
- BRANCH OFFICE
- STOCK WAREHOUSE

HEAD OFFICE : PUNE, MH

Global Abode, Plot#27, Nityanand Society, Opp Baramati co-op Bank Ltd., Dhankawadi, Pune, (MS) 411043. India.
Phone.: 020-24363841
[Email us.: info@globalelec.co.in](mailto:info@globalelec.co.in)

BRANCH OFFICE : BANGALORE

Chamber No: GC, GVSPL GARDEN'S (Opp. Vagdevi School) Balaji Layout No.111/7, Agrahara Road, Kogilu, Yelahanka Bengaluru – 560064, Karnataka
Phone.: +917709043846 / 7709043848
[Email us.:](mailto:info@globalelec.co.in)
info@globalelec.co.in
sales@globalelec.co.in

BRANCH OFFICE : HYDERABAD

Plot no 156, 6th cross road, Hastinapuri colony, Sainikpuri, Secunderabad -500094
Phone.: 9665946990
[Email us.:](mailto:info@globalelec.co.in)
info@globalelec.co.in ;
sales@globalelec.co.in



Bringing Technology at your Doorstep !



UDYAM Registration No
UDYAM-MH-26-0025495



GeM Unique Seller ID
D927180000321038

HEAD OFFICE : 27,Global Abode, Nityanand Society, Opp to Baramati co op Bank, Dhankawadi, Pune, Maharashtra 411043, INDIA
• Tel No. : 020 24363841 • Mob. : +91 9158448585 / 7709043841
• Email Id – info@globalelec.co.in



SINGAPORE OFFICE :

15 Yishun Industrial Street 1,
WIN 5 , #09 - 23, Singapore 768091
Phone: +65 6747 6050
Mobile: +65 96706354
Fax: +65 6747 6895
[Email: info@indiaelec.com.sg](mailto:info@indiaelec.com.sg)

